



Storage Sheds



Your Dream. Your Taste. Your Choice.



Introductions

Sunrise Structures is a locally owned and operated family business in Rochester, Indiana. It is our goal to offer affordable storage solutions that are sturdily built and made to last. Starting with quality materials, our dedicated team will hand-build your building and deliver it to your backyard, ready for you to enjoy!

Our friendly and helpful sales team will be happy to give you knowledgeable guidance in selecting the proper model and size for your needs! Members of our own Sunrise Structures team handle each part of the process for you.

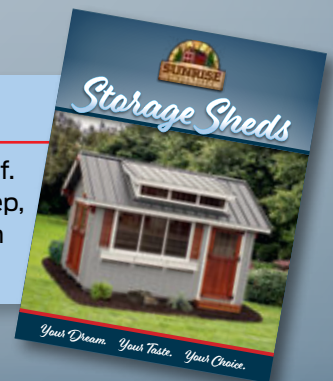
- ✓ **Processing your order**
- ✓ **Installing shed foundation (optional)**
- ✓ **Building your shed**
- ✓ **Delivery and set-up**

We strive for excellent workmanship and continued improvements all the time.

Thank-you for being our valued customer!

About Our Cover

12' x 14' Elite Series Utility Shed shown with Gap Gray siding, white trim and black metal roof. Including an 8' roof dormer, three 2'x3' brown windows, three 2' white flower boxes, a 4' step, and a Rustic Cedar accent on the following: classic corbels, a pair of wooden shutters, both the 6' double doors and a 3' single door, which have brown 4-lite windows.





Protection That Lasts



"Quality Metal Roof" – 40-year Warranty*

www.ramcosupply.com



"Real Wood Siding" – 50-Year Warranty*

www.roseburg.com



"Durable Paint" – 15-Year Warranty*

Sherwin-Williams.com



"A Shed You Can Trust" – 10-Year Warranty

Sunrise Structures

Our promise: With the completion of a certified site prep done prior to the delivery of your building, Sunrise Structures warrants to the original purchaser that your structure manufactured by Sunrise Structures is free of defects in material and workmanship, subject to the exceptions stated below. This warranty runs for 10 years from the date of purchase. Our 10-year warranty is also available for purchase if you decline a certified site prep. Otherwise all buildings come with a standard 5-year warranty and all items covered remain the same. A 10-year warranty is available only for Pro and Elite Buildings.

* Manufacturer's Warranty



Utility Shed

ELITE Series



12' x 16' Utility Shed Elite shown with charcoal gray siding, white trim, and black roof. Options include Lap siding, 8' roof dormer, 3' single door with a brown transom, three 2' x 3' brown windows, a pair of black shutters, a set white classic corbels and a 6' ramp.

Here's a classic! The Elite Series Utility Shed not only has all the functions of a normal shed but also the quality and beauty you can appreciate. Working in your yard will be a pleasure.

Build your
shed online



Scan Here!

Standard Features (included in base price)

- 2" x 6" treated floor joists 16" O.C.
- 3/4" tongue and groove plywood floor
- 78" wall height
- 1/2" painted DuraTemp siding
- All plywood construction
- Two classic arched vents
- 12" roof overhang
- 7/12 roof pitch
- Complete paint/sealant package
- Complete trim package
- 40-year RX4 metal roof
- One set square double doors on front wall – *removable*



Garden Shed

ELITE Series



12' x 20' Elite Series Garden Shed shown with white siding, white trim, black metal roof. Options include an 14' roof dormer three sets of black shutters, a set of classic corbels, three 2' white flowerboxes, 6' double doors with transom windows.

Enjoy your backyard! The Elite Series Garden Shed will make every backyard come alive with enthusiasm and organization. Possibilities are almost endless, from storing your lawn and garden tools to tinkering in your little shop. You won't regret your choice with this one!

Build your
shed online



Scan Here!

Standard Features (included in base price)

- 2" x 6" treated floor joists 16" O.C.
- ¾" tongue and groove plywood floor
- 78" wall height
- ½" painted DuraTemp siding
- All plywood construction
- Two classic arched vents
- 12" roof overhang
- 7/12 roof pitch
- Complete paint/sealant package
- Complete trim package
- 40-year RX4 metal roof
- One set square double doors on side wall – *removable*
- One 24" x 36" aluminum window on side wall – *removable*



Studio

ELITE Series



12' x 16' Elite Series Studio shown with gap gray siding, dark oak accent, burnish slate metal roof.

This Elite Studio is ideal for an improvement in any home owners dream. Whether you need a work from home space or place beside your pool for storage items. This well-designed building with modern style will add an impressive look to your back yard.

Build your
shed online



Scan Here!

Standard Features (included in base price)

- 2" x 6" treated floor joists 16"O.C.
- 3/4" tongue and groove plywood floor
- All plywood construction
- One sloped roof 2/12 pitch
- Pine corner accent
- Complete paint/sealant package
- Complete trim package
- 40-year RX4 metal roof
- One full-glass fiberglass door – *removable*
- Two 36" x 60" Vinyl picture windows – *removable*
- Seven 12" x 60" Vinyl picture windows – *removable*
- One bronze exterior light – *removable*



Gable Casita

ELITE Series



14' x 24' Elite Gable Casita shown with khaki siding, aged white trim and burnished slate metal roof. Options include an 8' roof dormer, four 2' x 4' brown combo windows, 6' double doors with transom windows, and rustic cedar accent on 2 pairs of wooden shutters, a set classic corbels, and the corner post.

The Elite Series Gable Casita is a charming option for any storage need or workspace that you might have. Add some custom touches like a dormer or extra windows to call it your own personal space.

Build your
shed online



Scan Here!

Standard Features (included in base price)

- 2" x 6" treated floor joists 16" O.C.
- 3/4" tongue and groove plywood floor
- 78" wall height
- 1/2" painted DuraTemp siding
- All plywood construction
- 3/4" composite decking with one 6" x 6" painted\stained porch posts
- Two classic arched vents
- 12" roof overhang
- 7/12 roof pitch
- Complete paint/sealant package
- Complete trim package
- 40-year metal roof
- One fiberglass entry door with 15 lite window – *removable*
- Four upright 10" x 29" white transom windows beside door – *removable*
- Four 24" x 36" white aluminum window – *removable*



Gable Cabin

ELITE Series



12' x 24' Elite Series Gable Cabin shown with clay siding, aged white trim and charcoal metal roof. Options include an timber frame porch, four 2' x 4' combo windows, and 6' double doors with 4-lite windows.

This Elite Series Gable Cabin is the perfect choice for a recreational getaway or even a finished out office at your home. Can be outfitted with cupola or dormer for outstanding appeal.

Build your
shed online



Scan Here!

Standard Features (included in base price)

- 2" x 6" treated floor joists 16" O.C.
- 3/4" tongue and groove plywood floor
- 78" wall height
- 1/2" Primed and painted DuraTemp siding
- All plywood construction
- 3/4" composite decking with two 6" x 6" painted\stained porch posts
- Two classic arched vents
- 12" roof overhang
- 7/12 roof pitch
- Complete paint/sealant package
- Complete trim package
- 40-year RX4 metal roof
- One fiberglass entry door with 15 lite window – *removable*
- Four- 24" x 36" white aluminum window – *removable*



Lofted Cabin

PRO Series



12' x 26' Pro Series Lofted Cabin shown with clay siding, urban bronze trim, a copper penny metal roof, optional 6" end wall overhang, one set of classic arched vents, 6' double doors with transom windows, two 2' urban bronze flower boxes, and two pairs of white shutters.

Standard Features (included in base price)

- 2" x 6" treated floor joists 16" O.C.
- ¾" tongue and groove plywood floor
- 78" Wall Height
- ⅝" painted T1-11 siding – **Value Series**
- ½" painted DuraTemp siding – **PRO Series**
- ¾" wooden decking with two 6"x 6" stained porch posts – **Value Series**
- ¾" composite decking with two 6" x 6" painted\stained porch posts – **PRO Series**
- All plywood construction
- Two aluminum vents
- Gambrel roof style
- Complete paint/sealant package
- Complete trim package
- 40-year RX4 metal roof
- Four 24" x 36" white aluminum windows – *removable*
- One fiberglass entry door with 9 lite window – *removable*



VALUE Series

12' x 30' Value Series Lofted Cabin shown khaki siding, and burnished slate metal roof.

Build your
shed online



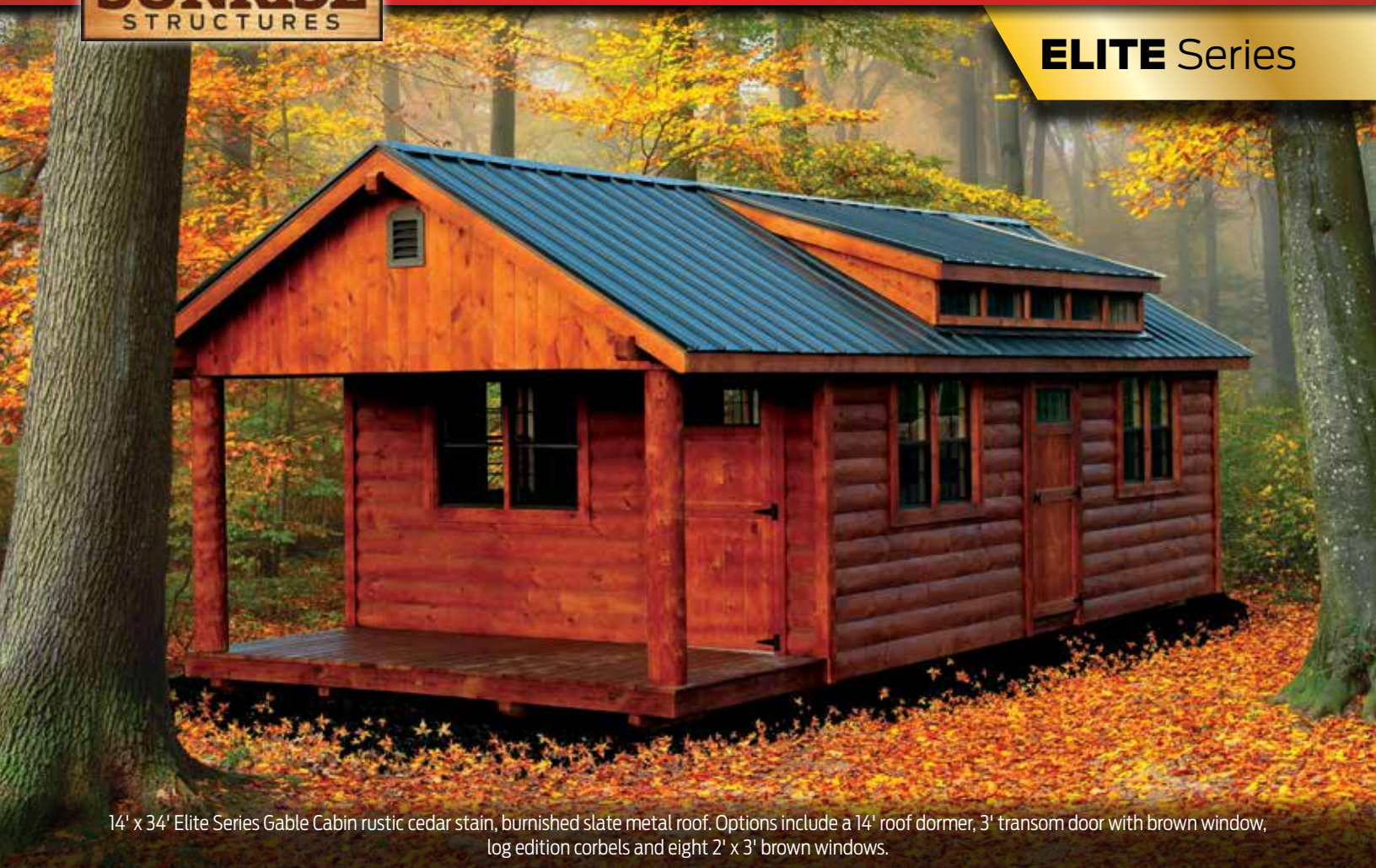
Scan Here!



Log Edition

Gable Cabin

ELITE Series



14' x 34' Elite Series Gable Cabin rustic cedar stain, burnished slate metal roof. Options include a 14' roof dormer, 3' transom door with brown window, log edition corbels and eight 2' x 3' brown windows.

Standard Features (included in base price)

- 2" x 6" treated floor joists 16" O.C.
- ¾" tongue and groove plywood floor
- 78" wall height
- 8" log siding
- All plywood construction
- Two 10" hand peeled log porch posts
- Two classic arched vents
- 12" roof overhang
- 7/12 Roof pitch
- Complete stain job
- Complete trim package
- 40-year RX4 metal roof
- One pine entry door with brown transom window – *removable*
- Six 24" x 36" brown aluminum windows – *removable*

The Log Edition Cabin is every outdoorsman's delight. With its rustic good looks and hand-peeled porch posts it yearns to be on your woodsy property and be the home of your next big hunt. Or your outdoor family cook-out.

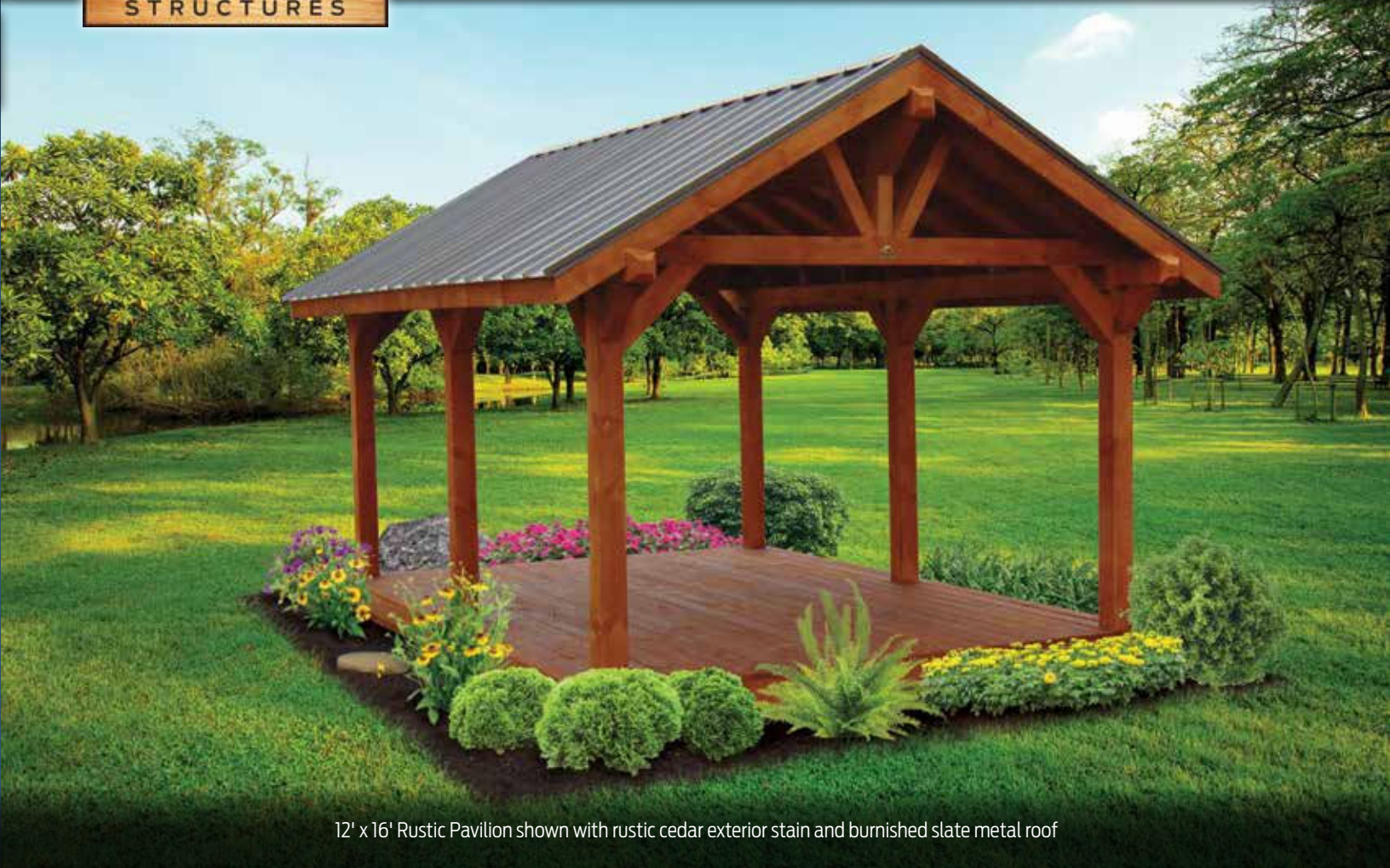
Build your
shed online



Scan Here!



Rustic Pavilion



12' x 16' Rustic Pavilion shown with rustic cedar exterior stain and burnished slate metal roof

This Rustic Pavilion is a great way to entertain your guests for a backyard barbecue. With its rustic look and timber frame design, it will be a great way to experience the natural beauty of the outdoors.

Build your
shed online



Scan Here!

Standard Features (included in base price)

- 2" x 6" treated floor joists 16" O.C.
- Treated Deck Board flooring
- 78" post height
- 6" x 6" angles on each post
- All rough cut rustic white pine
- 7/12 roof pitch
- Complete stain job
- 40-year RX4 metal roof



Gable Garage

ELITE Series



14' x 32' Elite Series Gable Garage shown with gale force siding, khaki trim, and taupe metal roof. Options include a 14' roof dormer, 6' double doors with transom windows, 9' x 7' carriage house panel door, four 2' x 4' combo windows, two pairs of shutters, two 2' flower boxes, a set of classic corbels and an 8' ramp.

This Elite Series garage is ideal for a variety of uses. With the standard Super Tuff floor you can park your new boat or your antique car inside to stay nice and dry. Or get the Double Super Tuff and work on your tractor inside this elegantly designed building.

Build your
shed online



Scan Here!

Standard Features (included in base price)

- 2" x 6" treated floor joists 12" O.C.
- 3/4" tongue and groove plywood floor
- 78" wall height
- 1/2" painted DuraTemp siding
- All plywood construction
- Two classic arched vents
- 12" roof overhang
- 7/12 roof pitch
- Complete paint/sealant package
- Complete trim package
- 40-year RX4 metal roof
- One 8' x 7' panel garage door on end wall – *removable*
- One 24" x 36" white aluminum window on left side wall – *removable*
- 3' wooden door with white transom windows, on right side – *removable*



Gable Garage

PRO Series



14' x 32' Pro Series Gable Garage shown with khaki siding, urban bronze trim, black metal roof. Options include an 3' wooden door with brown transom window, one 2' x 3' brown window and an 8' ramp.



VALUE Series

14' x 24' Value Series Gable Garage shown with clay siding, and burnished slate metal roof.

Build your
shed online



Scan Here!

Standard Features (included in base price)

- 2" x 6" treated floor joists 12" O.C.
- ¾" tongue and groove plywood floor
- 92" wall height
- ⅝" painted T1-11 siding – **Value Series**
- ½" painted DuraTemp siding – **PRO Series**
- All plywood construction
- Two aluminum vents
- 4/12 roof pitch
- Complete paint/sealant package
- Complete trim package
- 40-year RX4 metal roof
- One 9' x 7' roll-up garage door on end wall – *removable*
- 3' wooden door with white transom window, on right side – *removable*
- One 24" x 36" white aluminum window on right side wall – *removable*



Lofted Garage

PRO Series



12' x 32' Pro Series Lofted Garage shown with charcoal gray siding, argos gray trim, black metal roof. Options include an 6" end wall overhang, one 2' x 3' window, two pairs of white vinyl shutters and an 8' ramp.

Standard Features (included in base price)

- 2" x 6" treated floor joists 12" O.C.
- 3/4" tongue and groove plywood floor
- 78" wall height
- 5/8" painted T1-11 siding – **Value Series**
- 1/2" painted DuraTemp siding – **PRO Series**
- All plywood construction
- Two aluminum vents
- Gambrel roof style
- Complete paint/sealant package
- Complete trim package
- 40-year RX4 metal roof
- One 9' x 7' roll-up garage door on end wall – *removable*
- 3' wooden door with white transom window, on right side – *removable*
- One 24" x 36" white aluminum window on right side – *removable*



VALUE Series

12' x 32' Value Series Lofted Garage shown with gap gray siding, and charcoal metal roof.

Build your
shed online



Scan Here!



Lofted Garden Shed

PRO Series



12' x 20' Pro Series Lofted Garden Shed shown with aged white siding, urban bronze trim, and a burnished slate metal roof including 2' x 3' brown windows, rustic cedar accents on two pairs of wooden shutters and 6' double doors with brown transom windows, and a treated 6' ramp.



VALUE Series

10' x 16' Value Series Lofted Garden Shed shown in smoke house siding and black metal roof.

Build your
shed online



Scan Here!

Standard Features (included in base price)

- 2" x 6" treated floor joists 16" O.C.
- ¾" tongue and groove plywood floor
- 78" wall height
- ⅝" painted T1-11 siding – **Value Series**
- ½" painted DuraTemp siding – **PRO Series**
- All plywood construction
- Two aluminum vents
- Gambrel roof style
- Complete trim package
- Complete paint/sealant package
- 40-year RX4 metal roof
- One set arched double doors on side wall – *removable*
- Two 24" x 36" white aluminum windows – *removable*



Garden Shed

PRO Series



10' x 16' PRO Series Garden Shed with gap gray siding, white trim, a charcoal metal roof, a 2' flower box, one set of shutters and a 6' wooden ramp.



VALUE Series

10' x 16' Value Series Garden shed shown with gap gray siding, and a black metal roof.

Standard Features (included in base price)

- 2" x 6" treated floor joists 16" O.C.
- ¾" tongue and groove plywood floor
- 92" wall height
- ⅝" painted T1-11 siding – **Value Series**
- ½" painted DuraTemp siding – **PRO Series**
- All plywood construction
- Two aluminum vents
- 4/12 roof pitch
- Complete trim package
- Complete paint/sealant package
- 40-year RX4 metal roof
- One set arched double doors on side wall – *removable*
- One 24" x 36" white aluminum window on side wall – *removable*

Build your
shed online



Scan Here!



Utility Shed

PRO Series



12' x 16' Pro Series Utility Shed shown with marea baja siding, white trim, galvalume metal roof, 6' double doors with transom windows, two 2' x 3' windows, two pairs of white wooden shutters, and a 6' ramp.



VALUE Series

12' x 16' Value Series Utility Shed shown khaki siding, and a charcoal metal roof.

Build your
shed online



Scan Here!

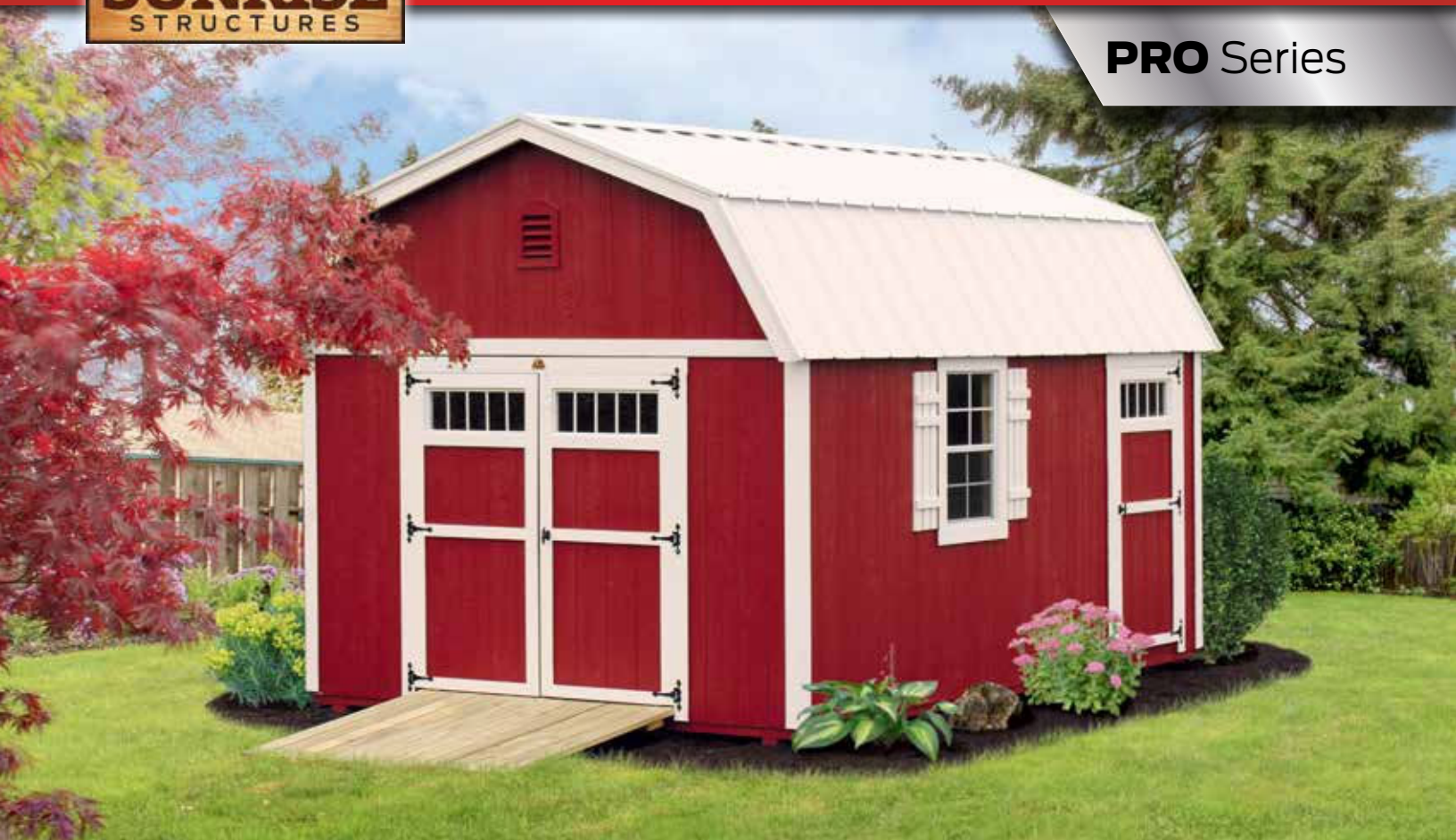
Standard Features (included in base price)

- 2" x 6" treated floor joists 16" O.C.
- 3/4" tongue and groove plywood floor
- 92" wall height
- 5/8" painted T1-11 siding - **Value Series**
- 1/2" Primed and painted DuraTemp siding - **PRO Series**
- All plywood construction
- Two aluminum vents
- 4/12 Roof pitch
- Complete trim package
- Complete paint/sealant package
- 40-year RX4 metal roof
- One set arched double doors on front wall – *removable*



Lofted Barn

PRO Series



12' x 16' Pro Series Lofted Barn shown with red siding, white trim, and brilliant white roof. Options include a 3' wooden door with transom, a 2' x 3' white window, one pair of wooden shutters, a pair of classic arched vents, 6" end wall overhang, a 6' ramp.



VALUE Series

12' x 16' Value Series Lofted Barn shown with clay siding, and a brown metal roof.

Build your
shed online



Scan Here!

Standard Features (included in base price)

- 2" x 6" treated floor joists 16" O.C.
- 3/4" tongue and groove plywood floor
- 78" wall height
- 5/8" painted T1-11 siding – **Value Series**
- 1/2" painted DuraTemp siding – **PRO Series**
- All plywood construction
- Two aluminum vents
- Gambrel roof style
- Complete trim package
- Complete paint/sealant package
- 40-year RX4 metal roof
- One set arched double doors on front wall – *removable*



Mini Barn

PRO Series



10' x 12' Pro Series Mini Barn shown with aged white siding, urban bronze trim, a burnished slate roof, optional 6" overhang, and a 6' ramp.



VALUE Series

10' x 12' Value Series Mini Barn shown with gap gray siding, and a black metal roof.

Build your
shed online



Scan Here!

Standard Features (included in base price)

- 2" x 6" treated floor joists 16" O.C.
- 3/4" tongue and groove plywood floor
- 48" side wall height
- 5/8" painted T1-11 siding – **Value Series**
- 1/2" painted DuraTemp siding – **PRO Series**
- All plywood construction
- Two aluminum vents
- Gambrel roof style
- Complete paint/sealant package
- Complete trim package
- 40-year RX4 metal roof
- One set arched double doors on front wall – *removable*



Offering You Choices

Wooden Doors (Single or Double)



Arched Trim



Square Trim



4-Lite Window



Transom Window

Large Door Options



Roll-up Door
9' x 7', 8' x 7' or 6' x 6'



Garage Door
9' x 7' or 8' x 7'



Carriage House
9' x 7' or 8' x 7'

Fiberglass Entry Doors



Solid



9-Lite



15-Lite



Transom

Studio Options (available with Studio Shed only)



12' x 60' Picture Window

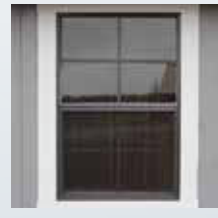


30' x 60' Picture Window



Full-glass
Fiberglass Door

Windows



2' x 3'
White/Brown Aluminum
Alum. Insulated White
Vinyl Insulated White, Brown



3' x 3'
White/Brown Aluminum
Alum. Insulated White
Vinyl Insulated White, Brown



29' x 10' Transom
White/Brown Aluminum
Vinyl Insulated White, Brown



2' x 4' Combo
White/Brown Aluminum

Interior Options



32' Workbench
2" x 6" framing



2' Shelving
2" x 4" framing



Pegboard



Urethane Foam
Insulated

Steps



4' Steps
Dark Oak or Rustic Cedar



Offering You Choices

Shutters



Slatted Wood Shutter



Vinyl Shutter

Vents



Classic Arched Vent

Flowerboxes



Flower Box
Available in 2' or 3' lengths

Accents



Pro Series only
6" Endwall Overhang



Keystone Accents



Elite Series only
8 ft. Roof Dormer



Elite Series only
14 ft. Roof Dormer



Elite Series only
Classic Corbels



Elite Series only
Corbels



Log Edition only
Log Cabin Corbels



Cupolas

Porch Options



Timber-framed



Vinyl

Ramps



5 ft. Wooden Ramps

Siding



Elite Series only
Lap Siding



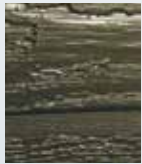
Offering You Colors



Painted Siding Colors*



Red



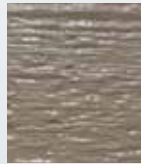
Urban Bronze



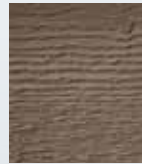
Argos Gray



Gale Force



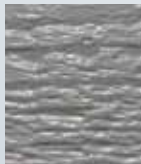
Clay



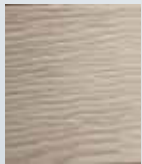
Smoke House



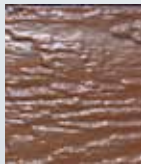
Oak Moss



Gap Gray



Aged White



Chestnut



Marea Baja



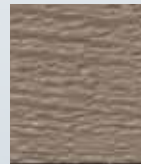
White



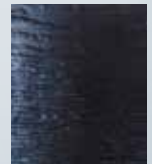
Charcoal Gray



Onyx Green



Khaki



Black

Accent Stain Color*

(Upcharge)



Dark Oak



Rustic Cedar

Shingles*

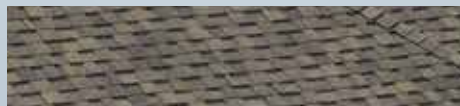
(Upcharge)



Black



Brown



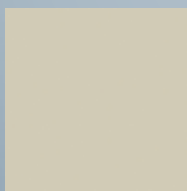
Weatherwood

Build your
shed online



Scan Here!

Metal Colors*



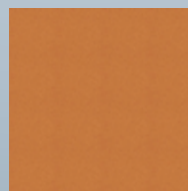
Light Stone



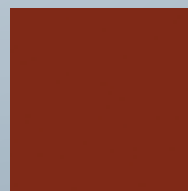
Brown



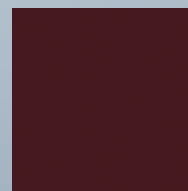
Taupe



Copper Penny



Rustic Red



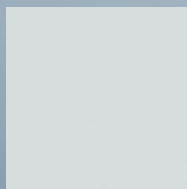
Burgundy



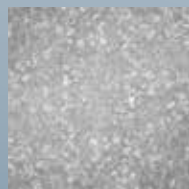
Gallery Blue



Hunter Green



Brilliant White



Galvalume



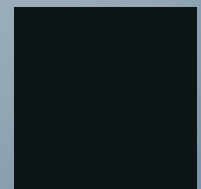
Gray



Charcoal



Burnished Slate



Black

*Due to variations in the print process, color samples may appear different than the actual product.



Super Tuff Floor

"Super Tuff" Floor (Standard)

- 4" x 6" notched skids
- 2" x 6" treated floor joists 16" O.C.
- ¾" tongue and groove (5 ply) plywood
- All skids and joists are fungal decay resistant
- All skids and joists are termite resistant



"Double Super Tuff" Floor (Optional)

- 4" x 6" notched skids
- 2" x 6" treated floor joists 12" O.C.
- **Two layers of ¾" tongue and groove (5 ply) plywood**
- All skids and joists are fungal decay resistant
- All skids and joists are termite resistant



Testing the Double Super Tuff floor with a 20,400 lb. truck.

***The floor is what carries the weight!
Be sure to check the details.***



Site Preparation



Option 1

4" of limestone on top of sod surface



Option 2

Remove the sod and have 4" of limestone even with sod surface with a 4" x 4" timber perimeter

Foundation Benefits

- Drains moisture properly
- Will stay level and solid
- Does not settle like blocks on dirt
- Discourages rodents (groundhogs, snakes, etc.)
- Looks neater and more attractive
- Protects your investment



Sunrise Services

- Limestone foundation pads
- Hauling out excess dirt
- Hauling in extra limestone
- Removing your old shed





Homecoming Day

The Day Is Here!

Bringing your shed to your home is an exciting time for you and us.

The set-up of your shed is usually completed in an hour or less.



The Mule (shown above) is a compact, hydraulic-driven machine with turf tires that do not damage grass. It makes installation convenient and simple.





Frequently Asked Questions

What do I need to prepare for, before my shed arrives?

A level site is very important for your building. We advise that you have a gravel or concrete pad, to ensure the building is perfectly level. For more information on gravel pads, speak with your local dealer for prices and details. If you do not have a concrete or gravel pad, and the ground is more than 8" out of level, you will need concrete pavers that you can purchase at your local Home Improvement Center.

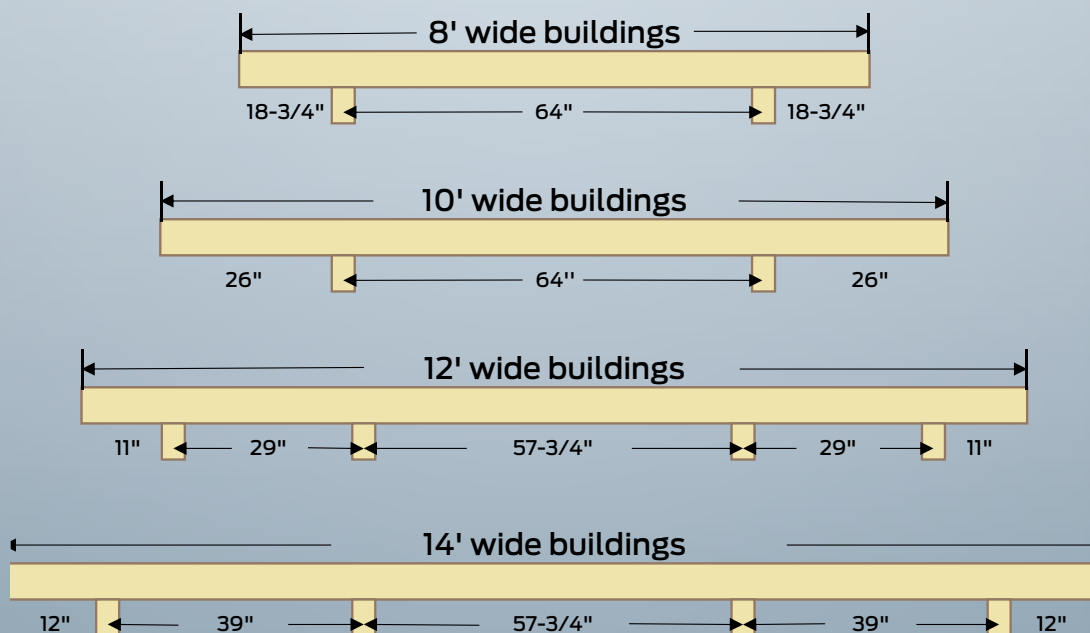
Do I need to be home for delivery?

Sunrise Structures delivery team always appreciates when you are home. If you cannot be present during the delivery time, please be sure to mark all four corners of where the building is going to be placed. Even if you are planning to be present for the shed delivery, we encourage you to use marker flags to assist, prior to the shed delivery.

How does the rent to own program work?

Our rent to own program allows you to rent the building with no credit check, if purchasing is not an option. The no strings attached plan allows you to have your own storage building when and where you need it. Purchasing the building at any point is also an option, or you can cancel the rental contract at any time, simply by calling us and requesting that we pick up the building at no further cost to you.

Skid Spacing Measurements



**Value and Pro Building width measurements are eave to eave.
Building dimensions do not calculate interior floor plan.**

It is the homeowners responsibility to check with the local building department and get any required permits if needed.



**Build your
shed online**



Scan Here!

We Accept:



Shirk's Wood Products

4920 E ST RD 110
Rochester, IN 46975
574-900-SHED (7433)

Thank you for your interest in Sunrise Structures!

Our team will be pleased to provide this service to you.